

## SERIES DETAILS and FOLDER TITLE LIST

### Administrative Histories (Johnson Administration), 5/1968 - 1/1969

**Series: National Foundation on the Arts and Humanities.  
National Endowment for the Arts [NAID 22782071]**

### ADMINISTRATIVE HISTORY: NATIONAL ENDOWMENT FOR THE ARTS

For scans of organization chart and index, see page 2.

#### **Digitization note:**

This series has been digitized in full and is available on DiscoverLBJ.org.

#### **Scope and content note:**

This series contains the narrative history and supporting documentation on the National Endowment for the Arts (NEA) prepared for President Lyndon B. Johnson's Departmental History Project. The narrative and supporting documents cover the NEA's background, establishment, organization, projects, and related legislation and contain materials on federal funding for the arts, public broadcasting, arts organizations, visual arts, design, architecture, performing arts, and literature.

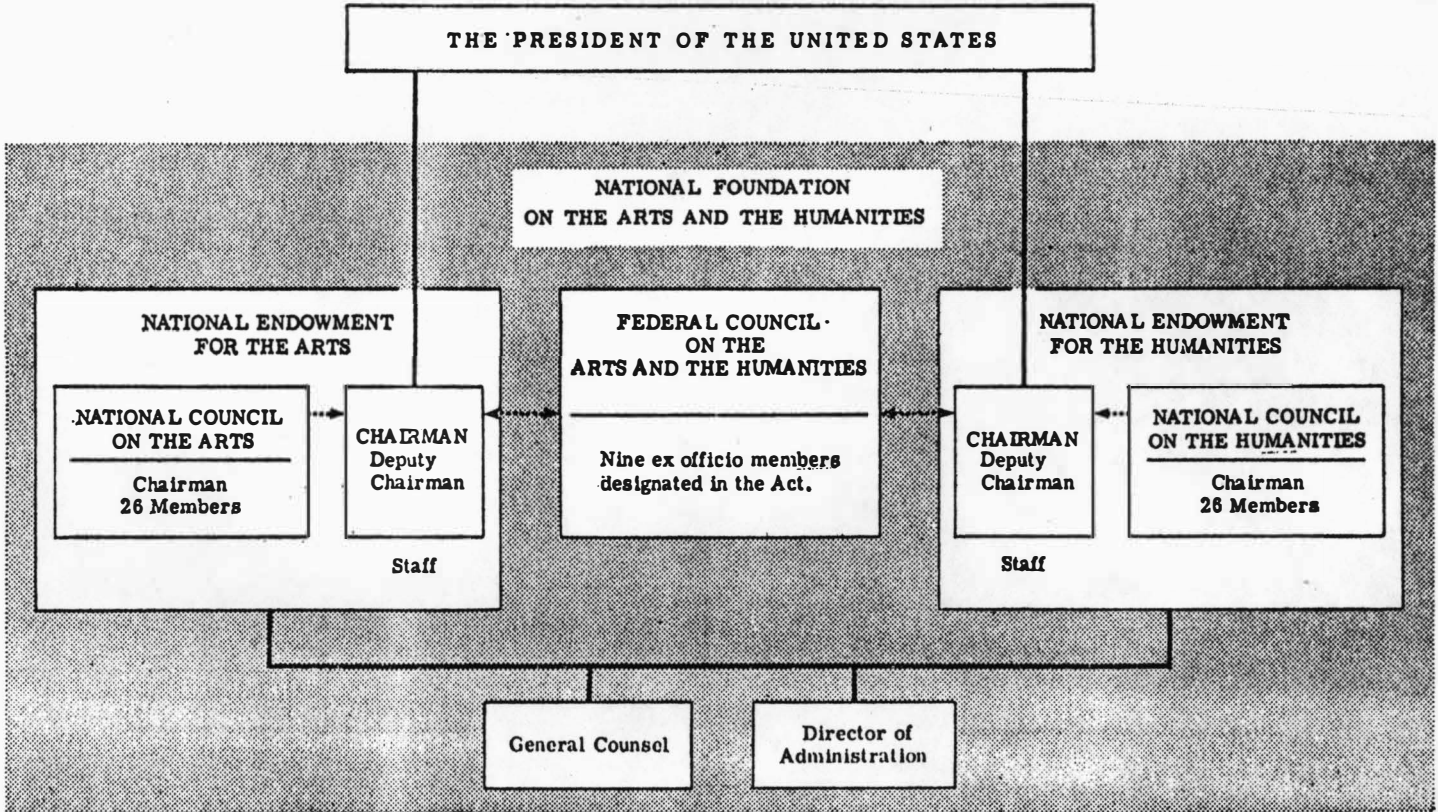
- Date range of series: 1968-1/1969 (5/15/1953-1/1969)
- 4 linear inches
- Available for research

### FOLDER TITLE LIST

#### **Box # Folder Title**

- |   |  |
|---|--|
| 1 | Volume I - History <ul style="list-style-type: none"><li>• Background</li><li>• Establishment of the Arts Council</li><li>• Establishment of the Arts Endowment</li><li>• Passage of the New Authorizing Legislation</li></ul> |
| 1 | Volume III- Documentary Supplement [[1 of 2]   |
| 1 | Volume II - Documentary Supplement [2 of 2]  |
| 1 | Material submitted by the Agency on January 15, 1969 and includes: Index to whole history, additional narrative, additional documentary supplement.  |

# NATIONAL FOUNDATION ON THE ARTS AND THE HUMANITIES



I N D E X

- ACADEMY OF AMERICAN POETS, 39-40
- AFFILIATE ARTISTS, INC., 89
- AFL/CIO SPACE COUNCIL, 70-71
- AMERICAN BALLET THEATRE, 17, 30, 60, 82
- AMERICAN CONSERVATORY THEATRE (ACT), 39, 68
- AMERICAN FILM INSTITUTE, THE, 1, 14, 23, 24, 31, 36, 37, 43, 56,  
60, 65-67, Supplement 9
- AMERICAN LITERARY ANTHOLOGY, 48, 52, 82
- AMERICAN MUSICAL DIGEST, See Music Critics Association
- AMERICAN NATIONAL OPERA COMPANY, See Opera, National Company
- AMERICAN NATIONAL THEATRE AND ACADEMY, Supplement 1-3
- AMERICAN P.E.N., 45, 70
- AMERICAN THEATRE LABORATORY, 46
- ANDERSON, REPRESENTATIVE JOHN B., 77
- APA, See Association of Producing Artists
- APPROPRIATIONS
- Fiscal 1965, National Council on the Arts, 8
  - Fiscal 1966, National Endowment for the Arts, 25
  - Fiscal 1967, National Endowment for the Arts, 41, 49
  - Fiscal 1968, National Endowment for the Arts, 59, 68
  - Fiscal 1969, National Endowment for the Arts, 93
- ARCHITECTURE PROGRAMS, 56, 87-88
- ARTISTS' HOUSING, 14, 31, 49, 68-69, 92, Supplement 9

Index...2

- ASHBROOK, REPRESENTATIVE JOHN M., 78
- ASSOCIATED COUNCILS OF THE ARTS, Supplement 4
- ASSOCIATION OF AMERICAN DANCE COMPANIES, 47
- ASSOCIATION OF PRODUCING ARTISTS - APA/PHOENIX, 60
- AUDIENCE DEVELOPMENT PROGRAM, 46, 61; See Also 71, 90; Supplement 4
- AUTHORIZATIONS, 25, 59, 65, 74-78, 84-85, 93
- BOW, REPRESENTATIVE FRANK T., 77
- BRADEMAS, REPRESENTATIVE JOHN, 77
- BRISTOL - MYERS COMPANY, 53
- BUSINESS AND THE ARTS, 53-54, Supplement 8
- BUSINESS COMMITTEE FOR THE ARTS, INC., 53-54, Supplement 8
- CHAMBER ORCHESTRA INSTITUTE, 46
- CHOREOGRAPHERS, 31, Supplement 4
- COLLEGE LITERARY FESTIVALS, 70
- COMMISSION OF FINE ARTS, 3,4
- COMPOSER ASSISTANCE PROGRAM, 23, 31, 61
- CONGRESS, iv, 1, 7, 15, 19, 22, 59, 72-74, 76-78, 84
- COORDINATED RESIDENCY TOURING PROGRAM, 88-89, Supplement 4
- COORDINATING COUNCIL OF LITERARY MAGAZINES, 58, Supplement 4
- CRITICS, ART CRITICISM, 54, 60
- DEMOCRATIC PLATFORM, 1964, 7
- DESIGN INSTITUTE, 38, 51, 56, 81
- D'HARNONCOURT, RENÉ, 31, 48, 85, 91
- DILLON, C. DOUGLAS, 53
- DISTINGUISHED SERVICE AWARDS, 63, 79, Supplement 9

Index...3

DOES A TIGER WEAR A NECKTIE?, 32

DVORAK, ANTONIN, 3

EDITORIAL COMMENT, See Press Comment

EDUCATIONAL TELEVISION GRANTS, 51-52, 53, 64, 91

EISENHOWER, DWIGHT D., 4

EXPERIMENTS IN ART AND TECHNOLOGY (E.A.T.), 91

FEDERAL COUNCIL ON THE ARTS AND THE HUMANITIES, 25

FEDERAL-STATE PARTNERSHIP PROGRAM, 25, 33, 34, 35, 36, 43-44, 80-81,  
94, Supplement 1, 9

FLORENCE AGREEMENT, 14

FOOTNOTES, 96ff

FORD FOUNDATION, 26, 66

FOREWORD, ii

FORUM, THE, See The Repertory Theater of Lincoln Center

GIFT FUNDS, 41, 42-43, 51, 53, 59, 60, 66, 68, 72, 78, 85, 87, Supplement 2

GOLDOVSKY OPERA THEATRE, 82

GRAHAM, MARTHA, 38, 82

GREAT WHITE HOPE, THE, 32

GROSS, REPRESENTATIVE H.R., 20, 21, 77

HALL, REPRESENTATIVE DURWARD, 77

HARLEM SCHOOL OF THE ARTS, 58

HECKSCHER, AUGUST, 4, 5

HILL, SENATOR LISTER, 23

H.R. 11308, 74, 76-78, 84-85

HULL HOUSE, 58

Index...4

HUMANITIES, 8, 10, 18

HUMPHREY, HUBERT H., 5, 8, 30

HUNTER COLLEGE "NEW IMAGE OF SOUND," 91

INDEPENDENT LITERARY AND ART PRESSES, 63

INDIVIDUAL GRANTS TO ARTISTS, 1, 31, 50, 57, 61, 63, 70, 78, 79,  
84, Supplement 4, 9

INNER CITY SUMMER ARTS PROGRAM, 86-87

INTERLOCHEN, See National Music Camp

INTERNATIONAL ARTS CONFERENCES, 44-45, Supplement 5

INTERNATIONAL THEATRE INSTITUTE, U.S. CENTRE, 45, 92

JACKSON MISSISSIPPI FOLK ART FESTIVAL, 90

JAVITS, SENATOR JACOB K., 5, 8, 10, 11

JAZZ, Supplement 5

JOFFREY BALLET, 38-39, 89

JOHNSON, LYNDON B., iii, 1, 5, 7, 9, 10, 11, 12, 13, 16, 20, 22,  
23, 24, 31, 34, 41, 49, 52, 55, 66, 84, 89, 93, Supplement 6-7, 9

JOHNSON, MRS. LYNDON B., 22, 55, Supplement 6, 7-8

KAPLAN (THE J. M.) FUND, INC., 48, 68-69, 92; See Also Artists' Housing

KENNEDY, JOHN F., 4, 5

JOHN F. KENNEDY CENTER FOR THE PERFORMING ARTS, 5, 25

KENNEDY, SENATOR ROBERT F., 69

KODALY FELLOWSHIP PROGRAM, 71-72

KQED/TV, 91

LABOR UNIONS AND THE ARTS, 70-71

LABORATORY THEATRE PROJECT, 32-33, Supplement 7-8, 9

LEE, MISS JENNIE, 58

Index...5

LEGISLATIVE HISTORY, 1, 3, 5, 6, 7, 8, 9, 10, 12, 15, 18, 19, 20, 21, 74, 76-78, 84-85, Supplement 6

LINCOLN CENTER REPERTORY THEATER, See The Repertory Theater of Lincoln Center

LINDSAY, MAYOR JOHN V., 69, 92

LITERARY STUDY GROUP, 70

MCCORMACK, REPRESENTATIVE JOHN W., 20

MAHON, REPRESENTATIVE GEORGE H., 77

MAYNOR, DOROTHY, See Harlem School of the Arts

MEETINGS, See National Council on the Arts

MOORHEAD, REPRESENTATIVE WILLIAM S., 8, 77

MOTION PICTURE ASSOCIATION OF AMERICA, 66-67

MUSEUM PURCHASE PLAN, 83-84

MUSEUMS PROGRAM, 31, 51

MUSIC CRITICS ASSOCIATION, 60

NATHAN (ROBERT) ASSOCIATES, INC., 51, 81

NATIONAL ARTS AND CULTURAL DEVELOPMENT ACT OF 1964, PUBLIC LAW 88-579, 7, 18

NATIONAL COMMISSION ON THE HUMANITIES, 8

NATIONAL COUNCIL OF FINE ARTS DEANS, 28

NATIONAL COUNCIL ON THE ARTS

General, iv, 7, 8, 12-15, 18, 22, 25, 36, 40, 58, Supplement 5, 6, 7-8

Members, 11, 16, 36, 42, 50, 55, 85, 93, Supplement 8

Meetings, 1st - 12                      8th - 59  
                  2nd - 16                      9th - 68  
                  3rd - 28                      10th - 69  
                  4th - 36                      11th - 78  
                  5th - 41                      12th - 85  
                  6th - 50                      13th - Supplement 1  
                  7th - 56                      14th - Supplement 8

Index...6

NATIONAL COUNCIL ON THE HUMANITIES, 1, 25

NATIONAL CULTURAL CENTER, 4, 5

NATIONAL ENDOWMENT FOR THE ARTS, 1, 24

NATIONAL ENDOWMENT FOR THE HUMANITIES, 1, 25, 52, 59

NATIONAL FOUNDATION ON THE ARTS AND THE HUMANITIES, 1, 12, 13, 15,  
22, 24, 25, 26, 52, Supplement 6

NATIONAL FOUNDATION ON THE ARTS AND THE HUMANITIES, PUBLIC LAW 89-209, 22;  
As Amended, Public Law 90-348, 84-85

NATIONAL MUSIC CAMP, 45

NATIONAL REPERTORY THEATRE, 82

NATIONAL TOURING PROGRAM, 82

NEW THING ART AND ARCHITECTURE CENTER, Supplement 4

NEW YORK SHAKESPEARE FESTIVAL, 60

OAKLAND UNIVERSITY AUDIENCE DEVELOPMENT PROJECT, 71

O'BRIEN, LAWRENCE, 20

OFF-OFF-BROADWAY THEATRES, See Professional Experimental Theatres Program

OFFICE OF EDUCATION, See U.S. Office of Education

O'NEILL (EUGENE) MEMORIAL THEATRE FOUNDATION, 92

OPERA, NATIONAL COMPANY, 23, 57, 60, 72, 82

ORCHESTRAS, Supplement 5

PANELS, iv-v, 14, 15, 16, 29, 30, 38, 50, 57, 61-62, 64, 65, 83, 94, Supplement 5

PELL, SENATOR CLAIBORNE, 5, 10, 12, 23, 74

P.E.N., See American P.E.N.

PERFORMING ARTS: THE ECONOMIC DILEMMA, 75

PLAYWRIGHTS EXPERIMENTAL THEATRE, 31-32

POETRY IN THE SCHOOLS PROGRAM, See Academy of American Poets

Index...7

POETS IN DEVELOPING COLLEGES, 63

POLICY, 29, 30, 34, 42-43, 58, 79-80, Supplement 1

POWELL, ADAM CLAYTON, 19, 23

PREFACE, iii

PRESIDENT'S COUNCIL ON YOUTH OPPORTUNITY, 86

PRESS COMMENT, iii, 2, 30, 33, 39, 40, 44, 47, 49, 52, 57, 64, 65,  
72, 74, 76, 79, 82, 84, 92, Supplement 3, 7-8

PROFESSIONAL EXPERIMENTAL THEATRES PROGRAM, 63-64, 81, Supplement 4

PUBLIC THEATRE, See New York Shakespeare Festival

QUIE, REPRESENTATIVE ALBERT H., 18

RADIO DRAMA, See WGBH

REGIONAL DANCE DEVELOPMENT PROGRAM, 70

REID, REPRESENTATIVE OGDEN R., 74, 77

REPERTORY THEATER OF LINCOLN CENTER, THE/THE FORUM, 90

RESIDENT PROFESSIONAL THEATRES PROGRAM, 45, 65, 72, Supplement 4, 9

RINGER, DR. ALEXANDER - STUDY, 71

ROBBINS, JEROME, See American Theatre Laboratory

ROCKEFELLER, DAVID, 53

ROCKEFELLER PANEL REPORT, THE PERFORMING ARTS: PROBLEMS AND PROSPECTS, 53

RURAL ARTS PROGRAM, 47

SAN FRANCISCO OPERA/WESTERN OPERA THEATER, 51, 82

SANTA FE OPERA, 72

SAPP, ALLEN - STUDY, 62

SCHMIDT, SANDRA - STUDY, 65

SCHULBERG, BUDD, See Watts Writers' Workshop

SCULPTURE PROJECT, 31, 48

Index...8

SMITH, DAVID, 11, 16, 36, 68

SPACE COUNCIL, See AFL/CIO SPACE Council

SPECIAL ASSISTANT TO THE PRESIDENT ON THE ARTS, 5, 25

STAFF, NATIONAL ENDOWMENT FOR THE ARTS/NATIONAL COUNCIL ON THE ARTS,  
11, v, 8, 9, 26, 27, 28, 69, 78, 80, 94, Supplement 1

STANFORD RESEARCH INSTITUTE, 36, 37, 56

STATE ARTS AGENCIES, See Federal-State Partnership Program

STATE OF THE UNION MESSAGE, PRESIDENT LYNDON B. JOHNSON, 10

STEIGER, REPRESENTATIVE WILLIAM A., 78

STEINBECK, JOHN, Supplement 8

STEVENS, GEORGE JR., 66, 67

STEVENS, ROGER L., Preface by, 111-v; Also 2, 5, 6, 7, 8, 9, 11, 12, 18,  
25, 29, 34, 41, 49, 58, 67, 68, 69, 73, 78, 87, 92, Supplement 1, 3, 6, 7

THEATRE DEVELOPMENT FUND, INC., 72-74

THOMPSON, REPRESENTATIVE FRANK, 5, 10, 12, 21, 23, 74, 77

TOYNBEE, ARNOLD, 111

TRUMAN, HARRY S., 4

U.S. OFFICE OF EDUCATION, 32, 54, Supplement 8

VENICE BIENNALE, 14, 31

VISUAL ARTISTS AWARDS, 57, Supplement 4

WASHINGTON GALLERY OF MODERN ART, 90-91

WASHINGTON OPERA SOCIETY, 72

WATTS WRITERS' WORKSHOP, 58

WEAVER, SECRETARY ROBERT C., 69, 92

WESTBETH CORPORATION, See Artists' Housing

Index...9

WGBH RADIO DRAMA DEVELOPMENT, 65

WHITE HOUSE AND THE ARTS, 9, 22, 52, 55, Supplement 6

WISCONSIN IDEA THEATRE, See Rural Arts Program

YOUNG AUDIENCES, INC., 90

YOUNG WRITERS' AWARDS, 70